

SABRE AIRCRAFT TOOLS

Flat Offset Angle Drills



SMX2AD Series 0.4HP (0.30KW) Rear Exhaust

Model Number Spindle Thread		Free Speed RPM	Weight lbs/kg	Length inch/mm Short
1/4"-28	9/32"-40			
S15705	S15725	4,500	1.8lbs (0.82kg)	10.43" (265mm)
S15706	S15726	3,000	1.8lbs (0.82kg)	10.43" (265mm)
S15707	S15727	800	2lbs (0.9kg)	11.81" (300mm)
S15708	S15728	500	2lbs (0.9kg)	11.81" (300mm)



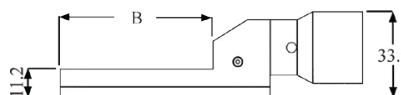
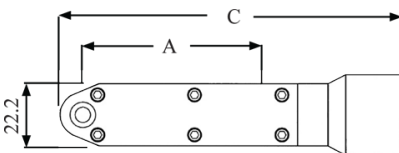
Model Number Spindle Thread		Free Speed RPM	Weight lbs/kg	Length inch/mm Medium
1/4"-28	9/32"-40			
S15709	S15729	4,500	2lbs (0.9kg)	11.6" (294mm)
S15710	S15730	3,000	2lbs (0.9kg)	11.6" (294mm)
S15711	S15731	800	2.2lbs (1kg)	13.1" (333mm)
S15712	S15732	500	2.2lbs (1kg)	13.1" (333mm)



Model Number Spindle Thread		Free Speed RPM	Weight lbs/kg	Length inch/mm Long
1/4"-28	9/32"-40			
S15713	S15733	4,500	2.1lbs (0.95kg)	13" (330mm)
S15714	S15734	3,000	2.1lbs (0.95kg)	13" (330mm)
S15715	S15735	800	2.3lbs (1.04kg)	14.5" (368mm)
S15716	S15736	500	2.3lbs (1.04kg)	14.5" (368mm)



Attachment #		Ref Length	Dimensions		
1/4"-28	9/32"-40		A	B	C
SPA40125	SPA40126	Short	2.49" (63.14mm)	2.44" (62mm)	4.8" (122.20mm)
SPA40135	SPA40136	Medium	3.83" (97.30mm)	3.79" (96.16mm)	6.2" (156.36mm)
SPA40145	SPA40146	Long	5.18" (131.46mm)	5.13" (130.32mm)	7.5" (190.52mm)



Safety Precaution: Read and follow all safety and operating instructions.
WARNING: Face and eye protections must be worn while operating power tools, per ANSI B186.1

Products and specifications subject to change without prior notice.



www.sabretools.com
 info@sabretools.com